

SALES | TRANSACTIONS | INVESTMENTS

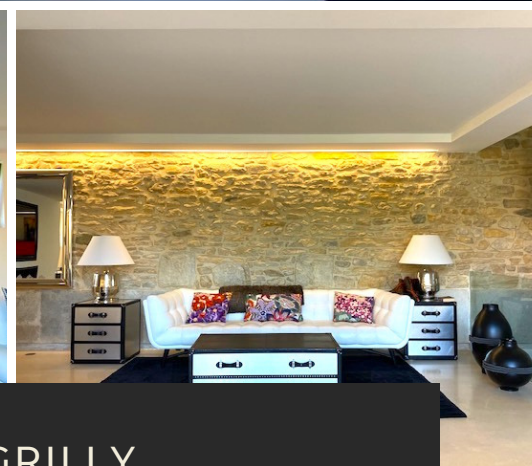
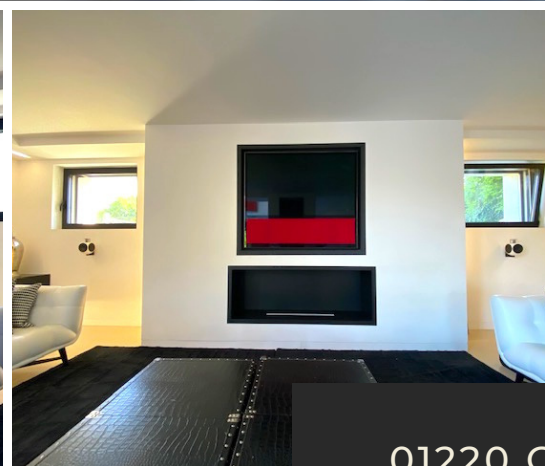


WWW.PRIMESWISSPROPERTY.COM

# FOR SALE

FABULOUS 5-BEDROOM  
FULLY REFURBISHED  
PERIOD PROPERTY

REF: PSP 120



## KEY FEATURES

- PLOT: 917 M2
- NET LIVING AREA: 325 M2
- TOTAL USABLE SPACE: 448 M2
- SET OVER 4 LEVELS (INCL. BASEMENT)
- 5 BEDROOMS // 5 BATHROOMS
- LARGE OPEN LIVING SPACES
- FULLY AUTOMATED CONTROLS // WIFI
- PARKING FOR 4 CARS

01220 GRILLY  
PAYS DE GEX, FRANCE

**PRIME SWISS PROPERTY**  
WWW.PRIMESWISSPROPERTY.COM

Martin J. LEE  
T: +41.79.233.85.30  
E: info@primeswissproperty.com



SALES | TRANSACTIONS | INVESTMENTS



WWW.PRIMESWISSPROPERTY.COM

# LIVING AREAS

LARGE OPEN LIVING SPACES  
WITH HIGH QUALITY  
FINISHES & FITTINGS



## DESCRIPTION

THE MAIN ENTRANCE OPENS TO A LARGE CUSTOM-BUILT SCULPTURAL STAIRCASE.

THE HALLWAY LEADS TO 3 LARGE RECEPTION AREAS INCLUDING DOUBLE HEIGHT DINING ROOM & TV LOUNGE. DINING AREA OPENS ONTO LARGE SOUTH-FACING TERRACE

OPEN AND MODERN FULLY FITTED KITCHEN WITH SIEMENS APPLIANCES.

**PRIME SWISS PROPERTY**

WWW.PRIMESWISSPROPERTY.COM

Martin J. LEE

T: +41.79.233.85.30

E: info@primeswissproperty.com

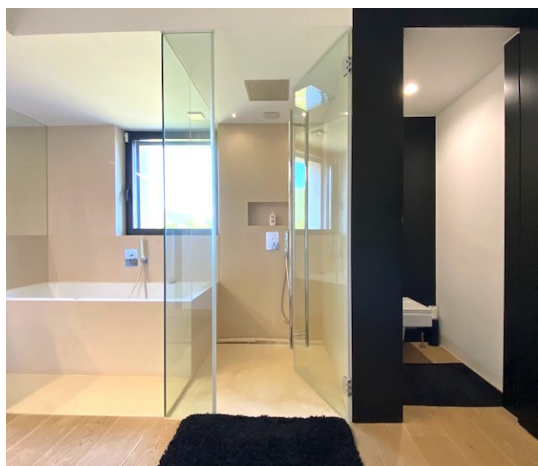
SALES | TRANSACTIONS | INVESTMENTS



WWW.PRIMESWISSPROPERTY.COM

## BEDROOMS

ALL BEDROOMS WITH EN-SUITE BATHROOM OR SHOWER WITH DRESSING AREA OR BUILT IN CLOSETS.



## DESCRIPTION

ALL BEDROOMS BENEFIT FROM LARGE SPACES AND EN-SUITE BATHROOMS OR SHOWER ROOMS IN EACH

FIXTURES AND FITTINGS ARE BUILT TO LUXURIOUS AND MODERN STANDARDS.

**PRIME SWISS PROPERTY**

WWW.PRIMESWISSPROPERTY.COM

Martin J. LEE

T: +41.79.233.85.30

E: [info@primeswissproperty.com](mailto:info@primeswissproperty.com)



SALES | TRANSACTIONS | INVESTMENTS



WWW.PRIMESWISSPROPERTY.COM

## BEDROOMS

ALL BEDROOMS WITH EN-SUITE BATHROOM OR SHOWER WITH DRESSING AREA OR BUILT IN CLOSETS.



### DESCRIPTION

ALL BEDROOMS BENEFIT FROM LARGE SPACES AND EN-SUITE BATHROOMS OR SHOWER ROOMS IN EACH

FIXTURES AND FITTINGS ARE BUILT TO LUXURIOUS AND MODERN STANDARDS.

**PRIME SWISS PROPERTY**

WWW.PRIMESWISSPROPERTY.COM

Martin J. LEE

T: +41.79.233.85.30

E: info@primeswissproperty.com

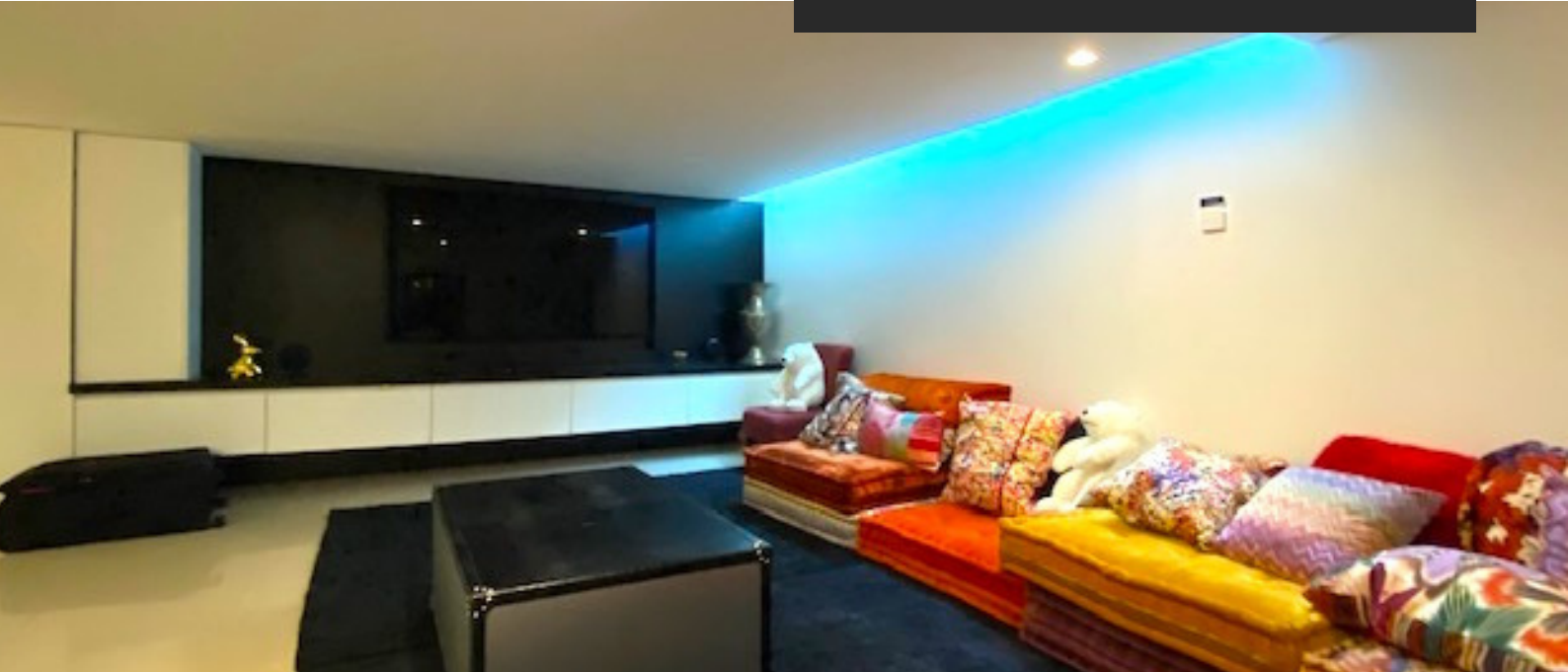
SALES | TRANSACTIONS | INVESTMENTS



WWW.PRIMESWISSPROPERTY.COM

## FAMILY FIRST

A WELL DESIGNED MODERN  
FAMILY HOME. LUXURIOUS  
AND CONVENIENT FOR  
CONTEMPORARY LIVING.



### BASEMENT LEVEL

- LARGE ENTERTAINMENT SUITE IN THE BASEMENT.
- GUEST BEDROOM WITH EN-SUITE.
- SMALL KITCHENETTE
- LARGE LAUNDRY ROOM
- STORAGE ROOM

**PRIME SWISS PROPERTY**

WWW.PRIMESWISSPROPERTY.COM

Martin J. LEE

T: +41.79.233.85.30

E: info@primeswissproperty.com



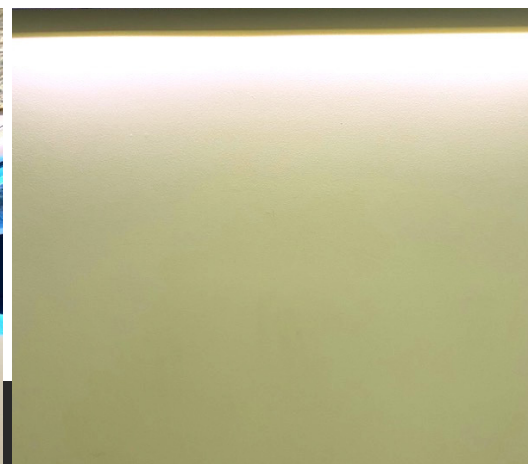
SALES | TRANSACTIONS | INVESTMENTS



[WWW.PRIMESWISSPROPERTY.COM](http://WWW.PRIMESWISSPROPERTY.COM)

## CONTEMPORARY LUXURY INTERIORS

HIGH SPECIFICATION  
FITTINGS WITH FULLY  
AUTOMATED CONTROLS,  
LED LIGHTING + WIFI.



## HIGH QUALITY DESIGN

A UNIQUE BLEND OF CONTEMPORARY  
DESIGN WITHIN AN OPULENT AND  
ELEGANT PERIOD PROPERTY.

HIGH-END MATERIALS, FULLY AUTOMATED  
TEMPERATURE, LIGHTING AND BLIND  
CONTROLS. ALL FLOORS ARE WIRED FOR  
TV AND WIFI. CAN BE CONNECTED TO  
SEPARATE CHANNELS.

**PRIME SWISS PROPERTY**  
[WWW.PRIMESWISSPROPERTY.COM](http://WWW.PRIMESWISSPROPERTY.COM)

Martin J. LEE  
T: +41.79.233.85.30  
E: [info@primeswissproperty.com](mailto:info@primeswissproperty.com)



SALES | TRANSACTIONS | INVESTMENTS



WWW.PRIMESWISSPROPERTY.COM

# FOR SALE

FABULOUS 5-BEDROOM  
FULLY REFURBISHED  
PERIOD PROPERTY

REF: PSP 120



**ASKING PRICE**

€ 2'250'000 EUROS

01220 GRILLY  
PAYS DE GEX, FRANCE

**PRIME SWISS PROPERTY**  
WWW.PRIMESWISSPROPERTY.COM

Martin J. LEE  
T: +41.79.233.85.30  
E: info@primeswissproperty.com



SALES | TRANSACTIONS | INVESTMENTS



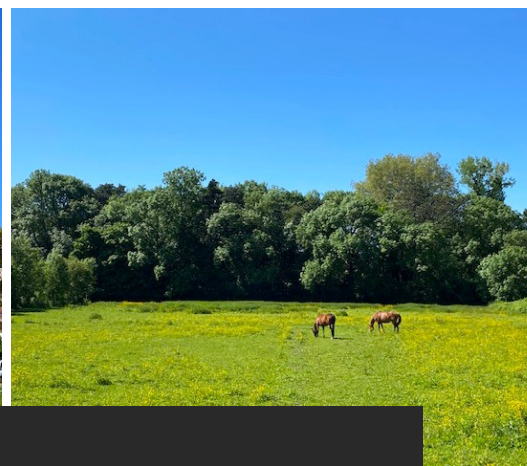
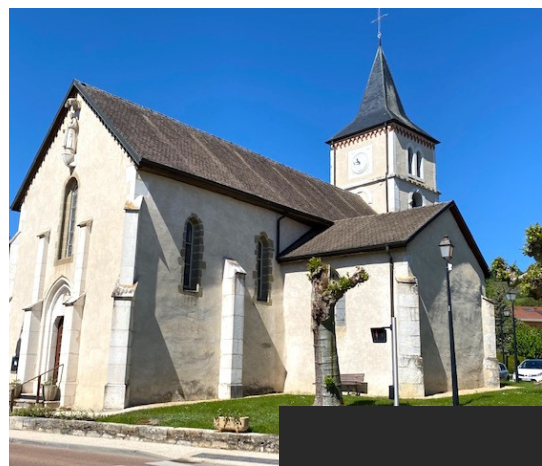
[WWW.PRIMESWISSPROPERTY.COM](http://WWW.PRIMESWISSPROPERTY.COM)

## QUIET & CALM LOCATION

10-MIN DRIVE TO A1  
MOTORWAY AND COPPEX

20-MIN DRIVE TO GENEVA  
AIRPORT

30-MIN DRIVE TO  
DOWNTOWN GENEVA



IF YOU WOULD LIKE TO FIND OUT MORE  
AND SCHEDULE A VIEWING, PLEASE  
CONTACT US .

### FOR DETAILS CONTACT

---

**PRIME SWISS PROPERTY**  
[WWW.PRIMESWISSPROPERTY.COM](http://WWW.PRIMESWISSPROPERTY.COM)

Martin J. LEE  
T: +41.79.233.85.30  
E: [info@primeswissproperty.com](mailto:info@primeswissproperty.com)